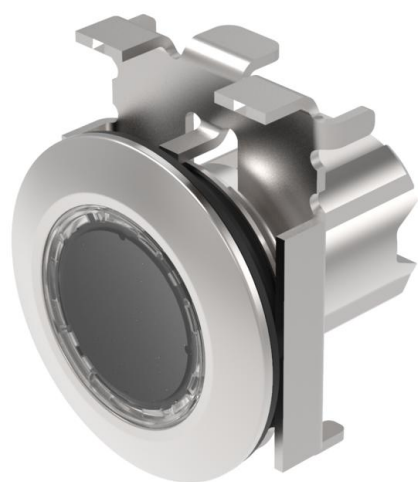


EAO – Your Expert Partner for Human Machine Interfaces

45-2234.4FK0.000 - Illuminated pushbutton - Actuator

45-2234.4FK0.000 - Illuminated pushbutton - Actuator



Attention: The preview is based on a sample product. This can differ from your current configuration.

Attribute

Design	flush
Front dimension	Ø 38 mm
Front form	round
IP front protection	IP66, IP67, IP69K
Mounting cut-out	Ø 30.5 mm
Front bezel colour	Sand grey
Front bezel material	Metal
Housing colour	Silver
Housing material	Metal
Illumination colour	White
Illuminative colour	White
Lens colour	Colourless
Lens illumination	illuminative
Lens material	Plastic
Lens optics	transparent
Lens shape	flush
Switching action	Maintained
Switching system	Slow-make switching element
Weight	0.072 kg

Schaltelement

max. number of switching elements	4
-----------------------------------	---

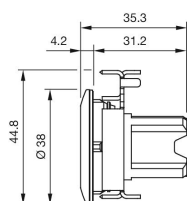
Function

Illuminated pushbutton

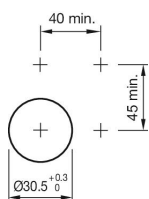
EAO – Your Expert Partner for Human Machine Interfaces

45-2234.4FK0.000 - Illuminated pushbutton - Actuator

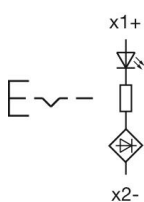
Dimensions



Mounting cut-outs



Wiring diagrams



Additional information

Front panel thickness 1 ... 6 mm

Push to unlatch