

EAO – Your Expert Partner for Human Machine Interfaces

45-2231.31H0.000 - Illuminated pushbutton - Actuator

45-2231.31H0.000 - Illuminated pushbutton - Actuator



Attention: The preview is based on a sample product. This can differ from your current configuration.

Attribute

Design	raised
Front dimension	Ø 29,5 mm
Front form	round
IP front protection	IP66, IP67, IP69K
Mounting cut-out	Ø 22.5 mm
Front bezel colour	Sand grey
Front bezel material	Metal
Housing colour	Black
Housing material	Plastic
Illumination colour	Green
Illuminative colour	Green
Lens colour	Green
Lens illumination	illuminative
Lens material	Plastic
Lens optics	transparent
Lens shape	flush
Lens type	level with front bezel
Switching action	Momentary
Switching system	Slow-make switching element
Weight	0.026 kg

Schaltelement

max. number of switching elements	4
-----------------------------------	---

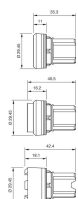
Function

Illuminated pushbutton

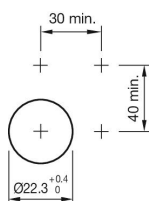
EAO – Your Expert Partner for Human Machine Interfaces

45-2231.31H0.000 - Illuminated pushbutton - Actuator

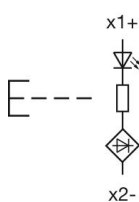
Dimensions



Mounting cut-outs



Wiring diagrams



Additional information

Mounting depth, incl. front plate, see chapter drawings