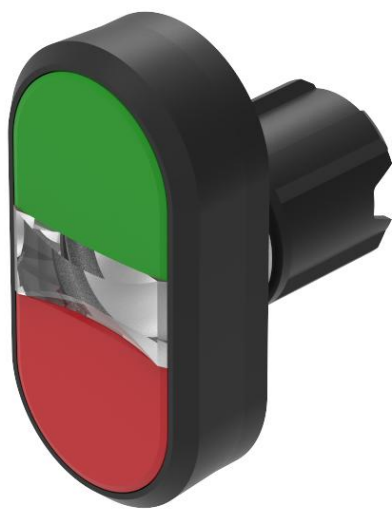


# EAO – Your Expert Partner for Human Machine Interfaces

## 45-2K31.16T0.000 - Illuminated double pushbutton - Actuator

### 45-2K31.16T0.000 - Illuminated double pushbutton - Actuator



Attention: The preview is based on a sample product. This can differ from your current configuration.

#### Attribute

Design	raised
Front dimension	58 mm x 30 mm
Front form	oval
IP front protection	IP66, IP67, IP69K
Mounting cut-out	Ø 22.5 mm
Front bezel colour	Black
Front bezel material	Plastic
Housing colour	Black
Housing material	Plastic
Type of illumination	illuminated
2nd Lens colour	Red
Lens colour	Green/ Red
Lens illumination	illuminative
Lens material	Plastic
Lens optics	opaque
Lens shape	flush
Switching action	Momentary
Switching system	Slow-make switching element
Weight	0.025 kg

#### Schaltelement

max. number of switching elements	4
-----------------------------------	---

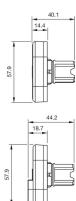
#### Function

Double pushbutton

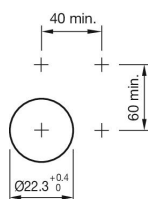
# EAO – Your Expert Partner for Human Machine Interfaces

45-2K31.16T0.000 - Illuminated double pushbutton - Actuator

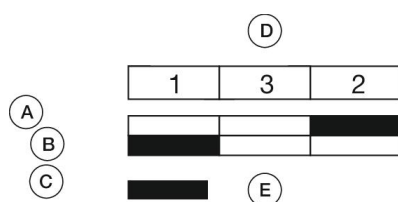
## Dimensions



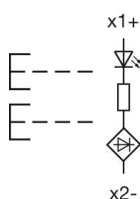
## Mounting cut-outs



## Component layouts



## Wiring diagrams



## Additional information

With illuminative centre window

Mounting depth, incl. front plate, see chapter drawings

With illuminative centre window