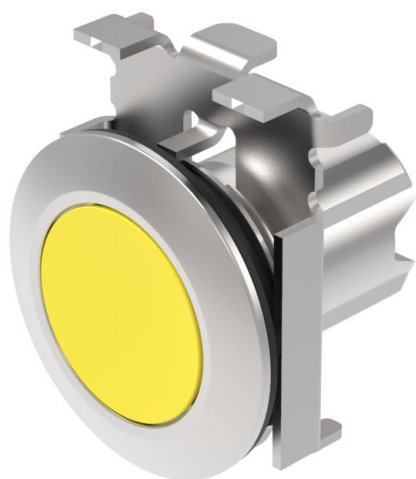


EAO – Your Expert Partner for Human Machine Interfaces

45-2131.4F40.000 - Pushbutton - Actuator

45-2131.4F40.000 - Pushbutton - Actuator



Attention: The preview is based on a sample product. This can differ from your current configuration.

Attribute

Design	flush
Front dimension	Ø 38 mm
Front form	round
IP front protection	IP66, IP67, IP69K
Mounting cut-out	Ø 30.5 mm
Front bezel colour	Sand grey
Front bezel material	Metal
Housing colour	Silver
Housing material	Metal
Lens colour	Yellow
Lens illumination	non illuminative
Lens material	Plastic
Lens optics	opaque
Lens shape	flush
Switching action	Momentary
Switching system	Slow-make switching element
Weight	0.074 kg

Schaltelement

max. number of switching elements	6
-----------------------------------	---

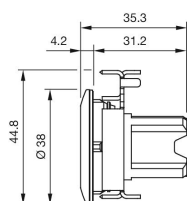
Function

Pushbutton

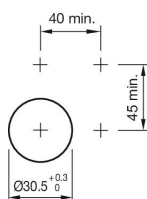
EAO – Your Expert Partner for Human Machine Interfaces

45-2131.4F40.000 - Pushbutton - Actuator

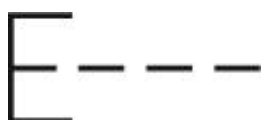
Dimensions



Mounting cut-outs



Wiring diagrams



Additional information

Front panel thickness 1 ... 6 mm

Front panel thickness 1 ... 6 mm