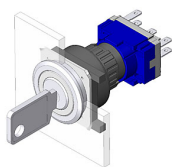


# EAO – Your Expert Partner for Human Machine Interfaces

## 61-2101.0/D - Keylock switch actuator 2 positions round

### 61-2101.0/D - Keylock switch actuator 2 positions round



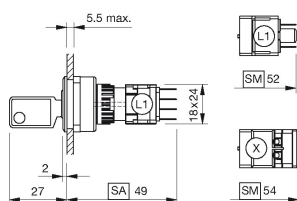
Attention: The preview is based on a sample product. This can differ from your current configuration.

<b>Mounting</b>	
Design	flush
<b>Other Attributes</b>	
Weight	0,065 kg
<b>Operating-/Indication part</b>	
Switching angle	42° right
<b>IP-Rating</b>	
Front protection	IP65
<b>Actuator</b>	
Switching action	Rest(a) - Momentary
<b>Switching element</b>	
Rotary positions	2
<b>Function</b>	
Keylock switch	

# EAO – Your Expert Partner for Human Machine Interfaces

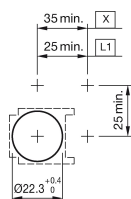
## 61-2101.0/D - Keylock switch actuator 2 positions round

### Dimensions



L1 = Solder/Plug-in terminal 2.8 x 0.5 mm

### Mounting cut-outs

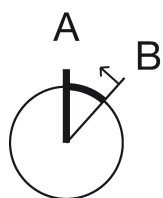


L1 = Solder/Plug-in terminal 2.8 x 0.5 mm

### Wiring diagram



### Switching positions



### Additional information

Standard lock: DOM 311

Two keys are supplied with each key lock switch

Optional lock numbers on request

### Legend

Switching action: A = Rest, B = Momentary