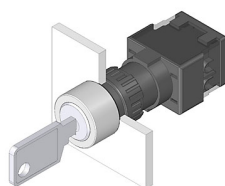


EAO – Your Expert Partner for Human Machine Interfaces

61-2101.0/D - Keylock switch actuator 2 positions round

61-2101.0/D - Keylock switch actuator 2 positions round



Attention: The preview is based on a sample product. This can differ from your current configuration.

Mounting

Mounting cut-out	Ø 16 mm
Design	raised

Other Attributes

Weight	0,065 kg
--------	----------

Operating-/Indication part

Switching angle	42° right
-----------------	-----------

IP-Rating

Front protection	IP65
------------------	------

Actuator

Switching action	Rest(a) - Momentary
------------------	---------------------

Switching element

Rotary positions	2
------------------	---

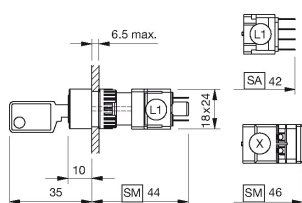
Function

Keylock switch

EAO – Your Expert Partner for Human Machine Interfaces

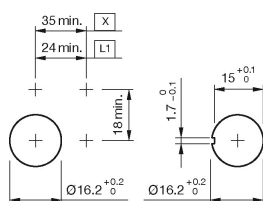
61-2101.0/D - Keylock switch actuator 2 positions round

Dimensions



L1 = Solder/Plug-in terminal 2.8 x 0.5 mm

Mounting cut-outs

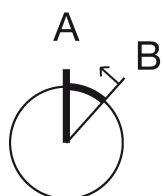


L1 = Solder/Plug-in terminal 2.8 x 0.5 mm

Wiring diagram



Switching positions



Additional information

Standard lock: DOM 311

Two keys are supplied with each key lock switch

Optional lock numbers on request

If mounted with anti-twist device, the lug is on the left side

Anti-twist ring not needed by using anti-twist device

Legend

Switching action: A = Rest, B = Momentary