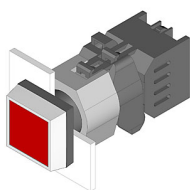


# EAO – Your Expert Partner for Human Machine Interfaces

## 704.202.2 - Flasher actuator front illumination

### 704.202.2 - Flasher actuator front illumination



*Attention: The preview is based on a sample product. This can differ from your current configuration.*

#### Mounting

Mounting cut-out	Ø 22,3 mm
Design	raised

#### Front

Front dimension	30 mm x 30 mm
Front shape	square
Front bezel material	Plastic
Front bezel colour	grey

#### Other Attributes

Marking plate colour	white
Marking plate optics	translucent
Marking plate illumination	illuminative
Weight	0,050 kg

#### Operating-/Indication part

Lens optics	transparent
Lens material	Plastic
Lens colour	red
Lens profile	flat

#### IP-Rating

Front protection	IP65
------------------	------

#### Connection Method

Terminal	Screw terminal
----------	----------------

#### Actuator

Housing material	Plastic
Housing colour	black

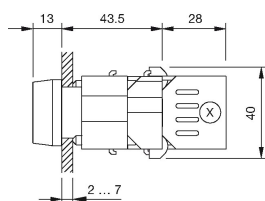
#### Function

Flasher
---------

# EAO – Your Expert Partner for Human Machine Interfaces

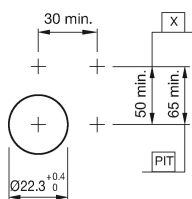
## 704.202.2 - Flasher actuator front illumination

### Dimensions



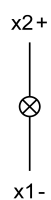
X = Screw terminal

### Mounting cut-outs



PIT = Push-in terminal

### Wiring diagram



### Additional information

Filament lamp or LED