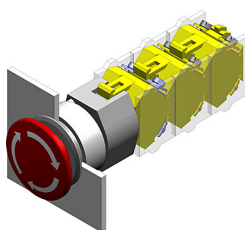


EAO – Your Expert Partner for Human Machine Interfaces

704.075.310 - Stop switch actuator

704.075.310 - Stop switch actuator



Attention: The preview is based on a sample product. This can differ from your current configuration.

Mounting

Mounting cut-out	Ø 30,5 mm
Design	flush

Front

Front ring material	Aluminium
Front ring colour	black anodized
Front shape	round
Front dimension	Ø 40 mm

Other Attributes

Marking	Stop
Weight	0,048 kg

Operating-/Indication part

Lens material	Plastic
Lens colour	red
Lens optics	opaque
Lens profile	Mushroom
Lens illumination	non-illuminative

IP-Rating

Front protection	IP65
------------------	------

Actuator

Switching action	Maintained
------------------	------------

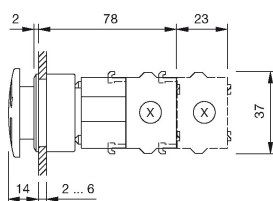
Function

Stop switch

EAO – Your Expert Partner for Human Machine Interfaces

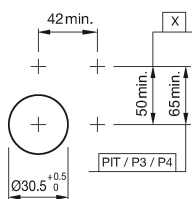
704.075.310 - Stop switch actuator

Dimensions



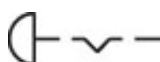
X = Screw terminal

Mounting cut-outs



PIT = Push-in terminal

Wiring diagram



Additional information

Twist to unlock clockwise

Max. 3 switching elements can be clipped on

The colour of anodized aluminium parts can vary due to technical production reasons

Legend

Switching action: C = Maintained