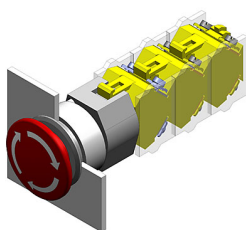


# EAO – Your Expert Partner for Human Machine Interfaces

## 704.074.210 - Stop switch actuator

### 704.074.210 - Stop switch actuator



*Attention: The preview is based on a sample product. This can differ from your current configuration.*

#### Mounting

Mounting cut-out	Ø 30,5 mm
Design	flush

#### Front

Front ring material	Aluminium
Front ring colour	black anodized
Front shape	round
Front dimension	Ø 40 mm

#### Other Attributes

Marking	Arrows
Weight	0,048 kg

#### Operating-/Indication part

Lens material	Plastic
Lens colour	red
Lens optics	opaque
Lens profile	Mushroom
Lens illumination	non-illuminative

#### IP-Rating

Front protection	IP65
------------------	------

#### Actuator

Switching action	Maintained
------------------	------------

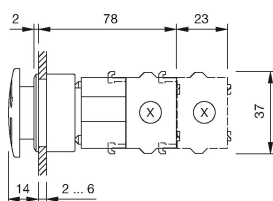
#### Function

Stop switch
-------------

# EAO – Your Expert Partner for Human Machine Interfaces

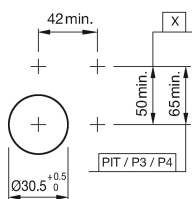
704.074.210 - Stop switch actuator

## Dimensions



X = Screw terminal

## Mounting cut-outs



PIT = Push-in terminal

## Wiring diagram



## Additional information

Twist to unlock clockwise

Max. 3 switching elements can be clipped on

The colour of anodized aluminium parts can vary due to technical production reasons

## Legend

Switching action: C = Maintained