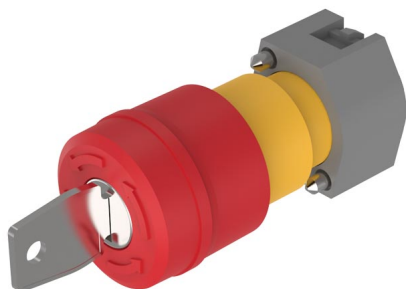


EAO – Your Expert Partner for Human Machine Interfaces

704.066.2 - Stop switch actuator

704.066.2 - Stop switch actuator



Attention: The preview is based on a sample product. This can differ from your current configuration.

Mounting

Mounting cut-out	Ø 22,3 mm
Design	raised

Front

Front shape	round
Front dimension	Ø 37 mm

Other Attributes

Marking	Arrows
Weight	0,300 kg

Operating-/Indication part

Lens material	Plastic
Lens optics	opaque
Lens profile	Mushroom
Lens colour	red
Lens illumination	non-illuminative

IP-Rating

Front protection	IP65
------------------	------

Actuator

Switching action	Maintained
Housing colour	yellow
Housing material	Plastic

Switching element

max. number of switching elements	3
-----------------------------------	---

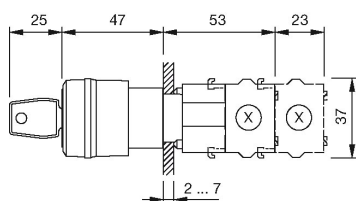
Function

Stop switch

EAO – Your Expert Partner for Human Machine Interfaces

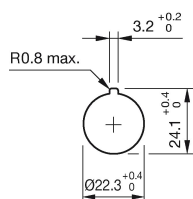
704.066.2 - Stop switch actuator

Dimensions

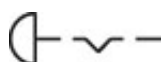


X = Screw terminal

Mounting cut-outs



Wiring diagram



Additional information

Shaft yellow

Key to unlock anti-clockwise

Lock type Euro-Locks 9500

Two keys are supplied with each key lock switch

Max. 3 slow-make elements can be clipped on

Legend

Switching action: C = Maintained