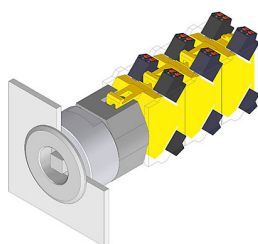


EAO – Your Expert Partner for Human Machine Interfaces

704.099.0x28 - Key-insert switch actuator 3 positions

704.099.0x28 - Key-insert switch actuator 3 positions



Attention: The preview is based on a sample product. This can differ from your current configuration.

Mounting

Mounting cut-out	Ø 30,5 mm
Design	flush

Front

Front shape	round
Front dimension	Ø 38 mm
Front ring material	Stainless steel
Front ring colour	natural

Other Attributes

Weight	0,130 kg
--------	----------

Operating-/Indication part

Switching angle	B = 45°, C = 45°
-----------------	------------------

IP-Rating

Front protection	IP67
------------------	------

Actuator

Switching action	Momentary - Rest - Maintained
------------------	-------------------------------

Switching element

Rotary positions	3
------------------	---

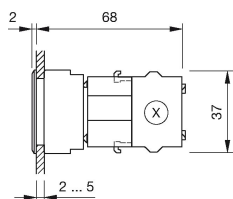
Function

Key insert switch	
-------------------	--

EAO – Your Expert Partner for Human Machine Interfaces

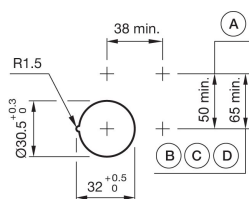
704.099.0x28 - Key-insert switch actuator 3 positions

Dimensions



X = Screw terminal

Mounting cut-outs



PIT = Push-in terminal

Additional information

In the Part-No. "x" stands for not defined actuator

Max. 3 switching elements can be clipped on

The actuator of the key insert switch is being produced according to customer specification. Please contact your local EAO Sales Office

Legend

Switching action: A = Rest, B = Momentary, C = Maintained