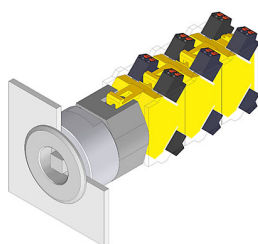


# EAO – Your Expert Partner for Human Machine Interfaces

## 704.097.0x28 - Key-insert switch actuator 3 positions

### 704.097.0x28 - Key-insert switch actuator 3 positions



*Attention: The preview is based on a sample product. This can differ from your current configuration.*

#### Mounting

|                  |           |
|------------------|-----------|
| Mounting cut-out | Ø 30,5 mm |
| Design           | flush     |

#### Front

|                     |                 |
|---------------------|-----------------|
| Front shape         | round           |
| Front dimension     | Ø 38 mm         |
| Front ring material | Stainless steel |
| Front ring colour   | natural         |

#### Other Attributes

|        |          |
|--------|----------|
| Weight | 0,130 kg |
|--------|----------|

#### Operating-/Indication part

|                 |                  |
|-----------------|------------------|
| Switching angle | C = 45°, B = 45° |
|-----------------|------------------|

#### IP-Rating

|                  |      |
|------------------|------|
| Front protection | IP67 |
|------------------|------|

#### Actuator

|                  |                               |
|------------------|-------------------------------|
| Switching action | Maintained - Rest - Momentary |
|------------------|-------------------------------|

#### Switching element

|                  |   |
|------------------|---|
| Rotary positions | 3 |
|------------------|---|

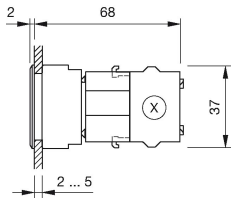
#### Function

|                   |  |
|-------------------|--|
| Key insert switch |  |
|-------------------|--|

# EAO – Your Expert Partner for Human Machine Interfaces

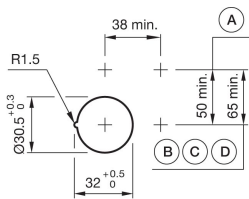
## 704.097.0x28 - Key-insert switch actuator 3 positions

### Dimensions



X = Screw terminal

### Mounting cut-outs



PIT = Push-in terminal

### Additional information

In the Part-No. "x" stands for not defined actuator

Max. 3 switching elements can be clipped on

The actuator of the key insert switch is being produced according to customer specification. Please contact your local EAO Sales Office

### Legend

Switching action: A = Rest, B = Momentary, C = Maintained