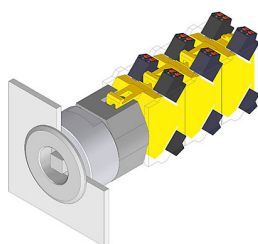


EAO – Your Expert Partner for Human Machine Interfaces

704.095.0x28 - Key-insert switch actuator 3 positions

704.095.0x28 - Key-insert switch actuator 3 positions



Attention: The preview is based on a sample product. This can differ from your current configuration.

Mounting

Mounting cut-out
Design Ø 30,5 mm
flush

Front

Front shape round
Front dimension Ø 38 mm
Front ring material Stainless steel
Front ring colour natural

Other Attributes

Weight 0,130 kg

Operating-/Indication part

Switching angle B = 45° / 45°

IP-Rating

Front protection IP67

Actuator

Switching action Momentary - Rest - Momentary

Switching element

Rotary positions 3

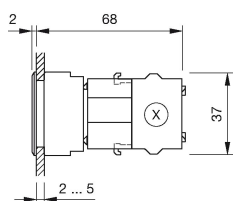
Function

Key insert switch

EAO – Your Expert Partner for Human Machine Interfaces

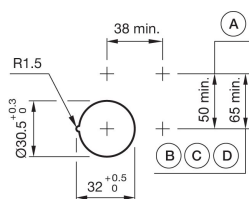
704.095.0x28 - Key-insert switch actuator 3 positions

Dimensions



X = Screw terminal

Mounting cut-outs



PIT = Push-in terminal

Additional information

In the Part-No. "x" stands for not defined actuator

Max. 3 switching elements can be clipped on

The actuator of the key insert switch is being produced according to customer specification. Please contact your local EAO Sales Office

Legend

Switching action: A = Rest, B = Momentary