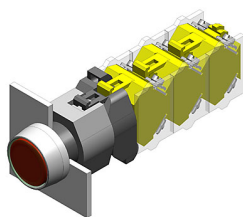


# EAO – Your Expert Partner for Human Machine Interfaces

## 704.063.4 - Illuminated pushbutton actuator

### 704.063.4 - Illuminated pushbutton actuator



Attention: The preview is based on a sample product. This can differ from your current configuration.

#### Mounting

Mounting cut-out	Ø 22,3 mm
Design	raised

#### Front

Front shape	round
Front dimension	Ø 29 mm
Front bezel colour	natural anodized
Front bezel material	Aluminium

#### Other Attributes

Weight	0,056 kg
--------	----------

#### Operating-/Indication part

Lens optics	transparent
Lens material	Plastic
Lens colour	yellow
Lens profile	flat
Lens illumination	illuminative

#### IP-Rating

Front protection	IP67
------------------	------

#### Connection Method

Terminal	Screw terminal
----------	----------------

#### Actuator

Switching action	Maintained
Housing material	Plastic
Housing colour	grey

#### Switching element

max. number of switching elements	3
-----------------------------------	---

#### Illumination

LED colour	yellow
------------	--------

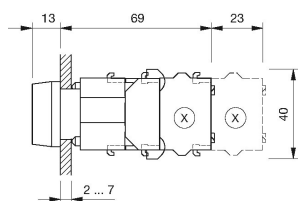
#### Function

Illuminated pushbutton
------------------------

# EAO – Your Expert Partner for Human Machine Interfaces

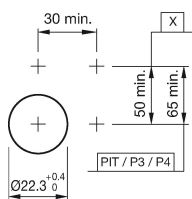
## 704.063.4 - Illuminated pushbutton actuator

### Dimensions



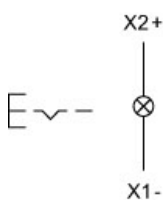
X = Screw terminal

### Mounting cut-outs



PIT = Push-in terminal

### Wiring diagram



### Additional information

Frontring with protective cover to be mounted with a torque of 40 Ncm onto actuator  
Max. 3 switching elements can be clipped on  
The colour of anodized aluminium parts can vary due to technical production reasons

### Legend

Switching action: C = Maintained