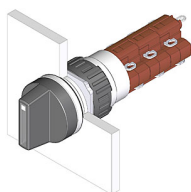


# EAO – Your Expert Partner for Human Machine Interfaces

## 52-273.0252 - Selector switch 2 positions

### 52-273.0252 - Selector switch 2 positions



*Attention: The preview is based on a sample product. This can differ from your current configuration.*

#### Mounting

Mounting cut-out	Ø 16 mm
Design	raised

#### Front

Front dimension	Ø 18 mm
Front shape	round

#### Other Attributes

Weight	0,006 kg
--------	----------

#### Operating-/Indication part

Switching angle	90° right
Lever illumination	
Lever shape	short
Lever material	Plastic

#### IP-Rating

Front protection	IP65
------------------	------

#### Connection Method

Terminal	Solder
----------	--------

#### Actuator

Switching action	Rest - Maintain
------------------	-----------------

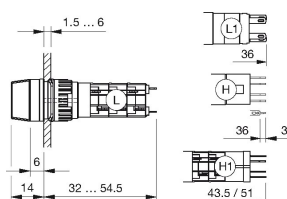
#### Switching element

Rotary positions	2
Switching system	Snap-action switching element
Contacts	3 NC + 3 NO
Switching current	5 A
Contact material	gold-plated silver
Switching voltage	250 V AC

# EAO – Your Expert Partner for Human Machine Interfaces

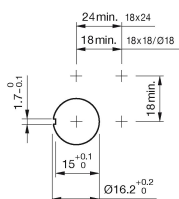
52-273.0252 - Selector switch 2 positions

## Dimensions

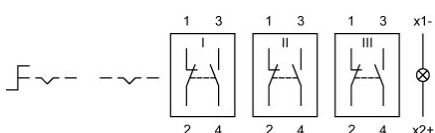


H = Universal terminal 2.0 x 0.5 mm

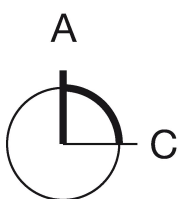
## Mounting cut-outs



## Wiring diagram



## Switching positions



## Additional information

illuminative

## Legend

Contacts: NC = Normally closed, NO = Normally open  
Switching action: A = Rest, C = Maintained