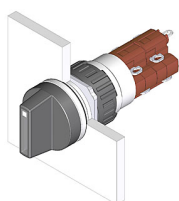


EAO – Your Expert Partner for Human Machine Interfaces

52-272.0252 - Selector switch 2 positions

52-272.0252 - Selector switch 2 positions



Attention: The preview is based on a sample product. This can differ from your current configuration.

Mounting

Mounting cut-out	Ø 16 mm
Design	raised

Front

Front dimension	Ø 18 mm
Front shape	round

Other Attributes

Weight	0,006 kg
--------	----------

Operating-/Indication part

Switching angle	90° right
Lever illumination	
Lever shape	short
Lever material	Plastic

IP-Rating

Front protection	IP65
------------------	------

Connection Method

Terminal	Solder
----------	--------

Actuator

Switching action	Rest - Maintain
------------------	-----------------

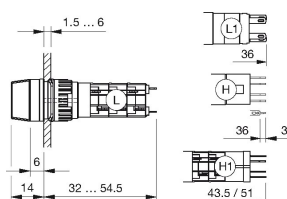
Switching element

Rotary positions	2
Switching system	Snap-action switching element
Contacts	2 NC + 2 NO
Switching current	5 A
Contact material	gold-plated silver
Switching voltage	250 V AC

EAO – Your Expert Partner for Human Machine Interfaces

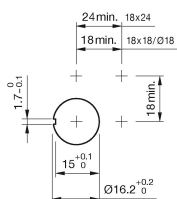
52-272.0252 - Selector switch 2 positions

Dimensions

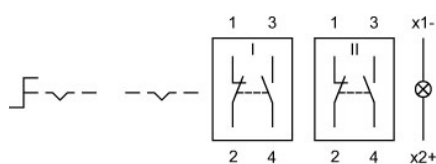


H = Universal terminal 2.0 x 0.5 mm

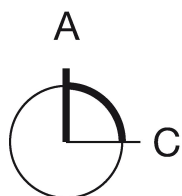
Mounting cut-outs



Wiring diagram



Switching positions



Additional information

illuminative

Legend

Contacts: NC = Normally closed, NO = Normally open
Switching action: A = Rest, C = Maintained