

# EAO – Your Expert Partner for Human Machine Interfaces

## 18-050.0052L - Indicator square - Actuator

### 18-050.0052L - Indicator square - Actuator



*Attention: The preview is based on a sample product. This can differ from your current configuration.*

#### Attribute

Design	raised
Front dimension	9 mm x 9 mm
Front form	square
IP front protection	IP40
Mounting cut-out	Ø 8 mm
Illumination colour	Red
Illuminative colour	Red
Lens colour	Red
Lens illumination	illuminative
Lens material	Plastic
Lens optics	translucent
Lens shape	flush
Operating voltage	Customer specific
Terminal	Soldering terminal
Weight	0.002 kg

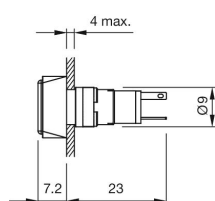
#### Function

Indicator

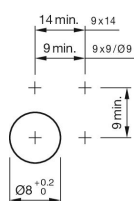
# EAO – Your Expert Partner for Human Machine Interfaces

18-050.0052L - Indicator square - Actuator

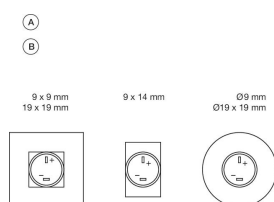
## Dimensions



## Mounting cut-outs



## Component layouts



## Wiring diagrams



## Additional information

Luminosity and wave length variations caused by LED manufacturing processes may cause slight differences regarding the illumination. The customer has to decide what resistor shall be used to the LED

Luminosity and wave length variations caused by LED manufacturing processes may cause slight differences regarding the illumination. The customer has to decide what resistor shall be used to the LED