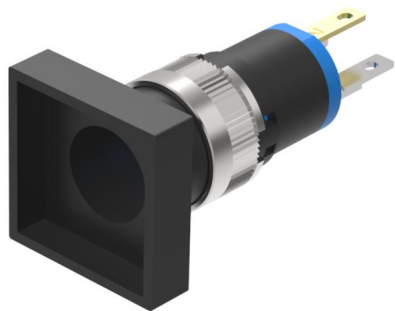


# EAO – Your Expert Partner for Human Machine Interfaces

## 18-288.035 - Pushbutton square - Actuator

### 18-288.035 - Pushbutton square - Actuator



Attention: The preview is based on a sample product. This can differ from your current configuration.

#### Attribute

Design	flush
Front dimension	19 mm x 19 mm
Front form	square
IP front protection	IP40
Contacts	1 NC
Contact material	Gold
Front bezel colour	Black
Front bezel material	Plastic
Housing colour	Black
Housing material	Plastic
Lens illumination	illuminative
Switching action	Maintained
Switching current	0.1 A
Switching system	Snap-action switching element
Switching voltage	42 V
Terminal	Soldering terminal
Weight	0.002 kg

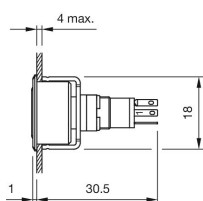
#### Function

Pushbutton

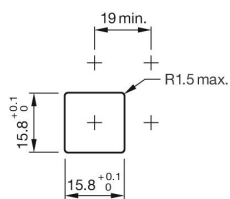
# EAO – Your Expert Partner for Human Machine Interfaces

## 18-288.035 - Pushbutton square - Actuator

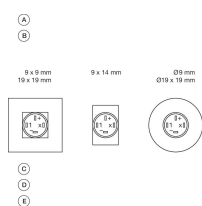
### Dimensions



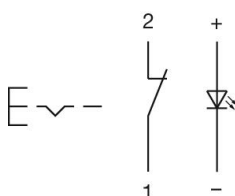
### Mounting cut-outs



### Component layouts



### Wiring diagrams



### Additional information

+/- terminals are not connected

Contacts: NC = Normally closed, NO = Normally open

Contacts: NC = Normally closed