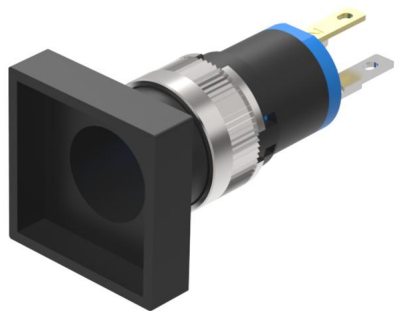


# EAO – Your Expert Partner for Human Machine Interfaces

## 18-288.035 - Illuminated pushbutton square - Actuator

### 18-288.035 - Illuminated pushbutton square - Actuator



Attention: The preview is based on a sample product. This can differ from your current configuration.

#### Attribute

Design	flush
Front dimension	19 mm x 19 mm
Front form	square
IP front protection	IP40
Contacts	1 NC
Contact material	Gold
Front bezel colour	Black
Front bezel material	Plastic
Housing colour	Black
Housing material	Plastic
Lens illumination	illuminative
Switching action	Maintained
Switching current	0.1 A
Switching system	Snap-action switching element
Switching voltage	42 V
Terminal	Soldering terminal
Weight	0.002 kg

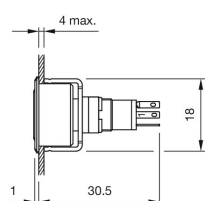
#### Function

Illuminated pushbutton

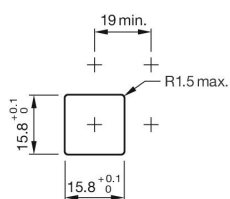
# EAO – Your Expert Partner for Human Machine Interfaces

18-288.035 - Illuminated pushbutton square - Actuator

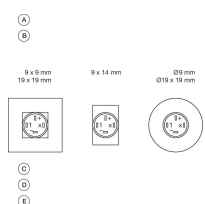
## Dimensions



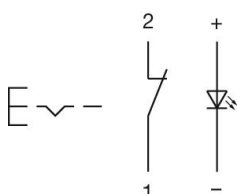
## Mounting cut-outs



## Component layouts



## Wiring diagrams



## Additional information

Contacts: NC = Normally closed, NO = Normally open

Contacts: NC = Normally closed