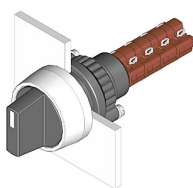


EAO – Your Expert Partner for Human Machine Interfaces

14-509.02502 - Selector switch actuator 2 positions

14-509.02502 - Selector switch actuator 2 positions



Attention: The preview is based on a sample product. This can differ from your current configuration.

Mounting

| | |
|------------------|-----------|
| Mounting cut-out | Ø 22,3 mm |
| Design | raised |

Front

| | |
|----------------------|------------------|
| Front dimension | Ø 29 mm |
| Front shape | round |
| Front bezel colour | natural anodized |
| Front bezel material | Aluminium |

Other Attributes

| | |
|--------|----------|
| Weight | 0,030 kg |
|--------|----------|

Operating-/Indication part

| | |
|--------------------|------------------|
| Lever illumination | non-illuminative |
| Lever colour | black |
| Lever material | Plastic |
| Lever shape | short |
| Switching angle | 90° right |

IP-Rating

| | |
|------------------|------|
| Front protection | IP67 |
|------------------|------|

Connection Method

| | |
|----------|--------|
| Terminal | Solder |
|----------|--------|

Actuator

| | |
|------------------|-----------------|
| Switching action | Rest - Maintain |
|------------------|-----------------|

Switching element

| | |
|-------------------|-------------------------------|
| Rotary positions | 2 |
| Switching system | Snap-action switching element |
| Switching current | 5 A |
| Contacts | 4 NC + 4 NO |
| Contact material | gold-plated silver |
| Switching voltage | 250 V AC |

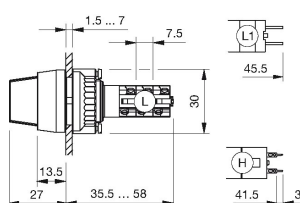
Function

| |
|-----------------|
| Selector switch |
|-----------------|

EAO – Your Expert Partner for Human Machine Interfaces

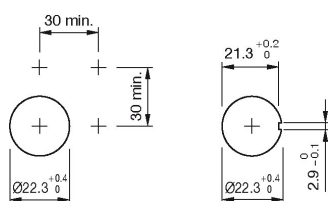
14-509.02502 - Selector switch actuator 2 positions

Dimensions

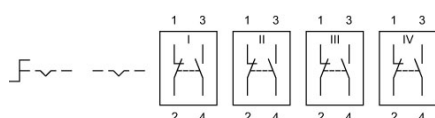


L = Solder terminal

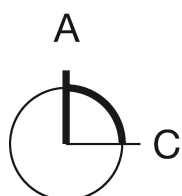
Mounting cut-outs



Wiring diagram



Switching positions



Additional information

The colour of anodized aluminium parts can vary due to technical production reasons

Legend

Contacts: NC = Normally closed, NO = Normally open

Switching action: A = Rest, C = Maintained