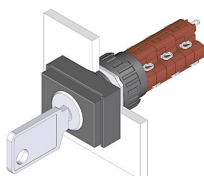


# EAO – Your Expert Partner for Human Machine Interfaces

## 51-197.025D2 - Keylock switch 2 positions

### 51-197.025D2 - Keylock switch 2 positions



*Attention: The preview is based on a sample product. This can differ from your current configuration.*

#### Mounting

Mounting cut-out  
Design Ø 16 mm  
raised

#### Front

Front dimension  
Front shape 18 mm x 24 mm  
rectangular

#### Other Attributes

Weight 0,016 kg

#### Operating-/Indication part

Switching angle 90° right

#### IP-Rating

Front protection IP65

#### Connection Method

Terminal Solder

#### Actuator

Switching action Rest(a) - Maintain(a)

#### Switching element

Rotary positions 2  
Switching system Snap-action switching element  
Switching current 5 A  
Contacts 3 NC + 3 NO  
Contact material  
Switching voltage 250 V AC

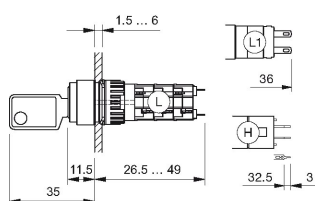
#### Function

Keylock switch

# EAO – Your Expert Partner for Human Machine Interfaces

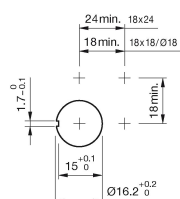
## 51-197.025D2 - Keylock switch 2 positions

### Dimensions

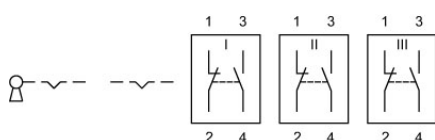


H = Universal terminal 2.0 x 0.5 mm

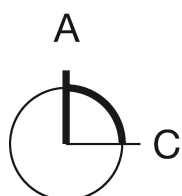
### Mounting cut-outs



### Wiring diagram



### Switching positions



### Additional information

Standard lock: DOM 311

Two keys are supplied with each key lock switch

Optional lock numbers on request

### Legend

Contacts: NC = Normally closed, NO = Normally open

Switching action: A = Rest, C = Maintained