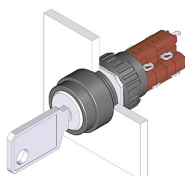


# EAO – Your Expert Partner for Human Machine Interfaces

## 51-136.025D2 - Keylock switch 2 positions

### 51-136.025D2 - Keylock switch 2 positions



*Attention: The preview is based on a sample product. This can differ from your current configuration.*

#### Mounting

Mounting cut-out	Ø 16 mm
Design	raised

#### Front

Front dimension	Ø 18 mm
Front shape	round

#### Other Attributes

Weight	0,016 kg
--------	----------

#### Operating-/Indication part

Switching angle	90° right
-----------------	-----------

#### IP-Rating

Front protection	IP65
------------------	------

#### Connection Method

Terminal	Solder
----------	--------

#### Actuator

Switching action	Rest(a) - Maintain(a)
------------------	-----------------------

#### Switching element

Rotary positions	2
Switching system	Snap-action switching element
Switching current	5 A
Contacts	2 NC + 2 NO
Contact material	
Switching voltage	250 V AC

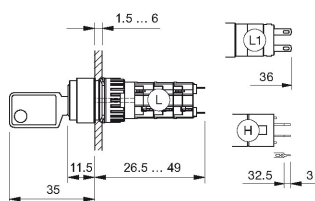
#### Function

Keylock switch	
----------------	--

# EAO – Your Expert Partner for Human Machine Interfaces

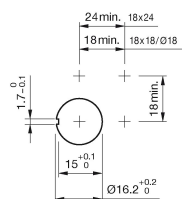
## 51-136.025D2 - Keylock switch 2 positions

### Dimensions

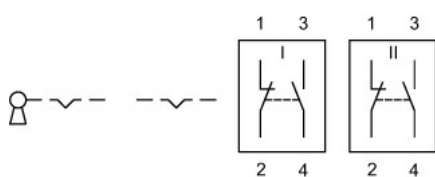


H = Universal terminal 2.0 x 0.5 mm

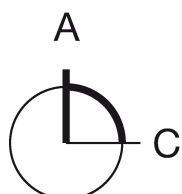
### Mounting cut-outs



### Wiring diagram



### Switching positions



### Additional information

Standard lock: DOM 311

Two keys are supplied with each key lock switch

Optional lock numbers on request

### Legend

Contacts: NC = Normally closed, NO = Normally open

Switching action: A = Rest, C = Maintained