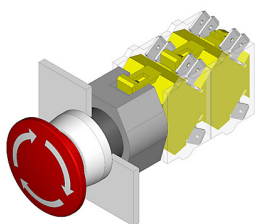


# EAO – Your Expert Partner for Human Machine Interfaces

## 704.075.3 - Stop switch actuator

### 704.075.3 - Stop switch actuator



*Attention: The preview is based on a sample product. This can differ from your current configuration.*

#### Mounting

|                  |           |
|------------------|-----------|
| Mounting cut-out | Ø 22,3 mm |
| Design           | raised    |

#### Front

|                     |                  |
|---------------------|------------------|
| Front ring material | Aluminium        |
| Front shape         | round            |
| Front dimension     | Ø 40 mm          |
| Front ring colour   | natural anodized |

#### Other Attributes

|         |          |
|---------|----------|
| Marking | Stop     |
| Weight  | 0,047 kg |

#### Operating-/Indication part

|                   |                  |
|-------------------|------------------|
| Lens material     | Plastic          |
| Lens optics       | opaque           |
| Lens profile      | Mushroom         |
| Lens colour       | red              |
| Lens illumination | non-illuminative |

#### IP-Rating

|                  |      |
|------------------|------|
| Front protection | IP65 |
|------------------|------|

#### Actuator

|                  |            |
|------------------|------------|
| Switching action | Maintained |
|------------------|------------|

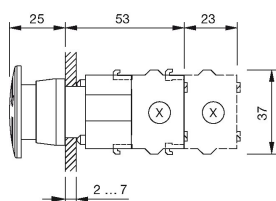
#### Function

|             |
|-------------|
| Stop switch |
|-------------|

# EAO – Your Expert Partner for Human Machine Interfaces

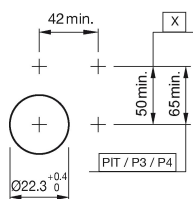
## 704.075.3 - Stop switch actuator

### Dimensions



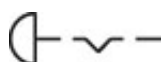
X = Screw terminal

### Mounting cut-outs



PIT = Push-in terminal

### Wiring diagram



### Additional information

Twist to unlock clockwise

Max. 3 switching elements can be clipped on

The colour of anodized aluminium parts can vary due to technical production reasons

### Legend

Switching action: C = Maintained