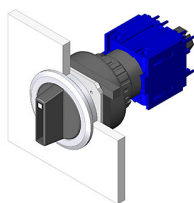


EAO – Your Expert Partner for Human Machine Interfaces

71-656.0 - Selector switch 3 positions round

71-656.0 - Selector switch 3 positions round



Attention: The preview is based on a sample product. This can differ from your current configuration.

Mounting

Design flush

Other Attributes

Weight 0,003 kg

Operating-/Indication part

Switching angle
Lever illumination
Lever shape short
Lever material Plastic

IP-Rating

Front protection IP65

Actuator

Switching action Momentary - Rest - Maintain

Switching element

Rotary positions 3

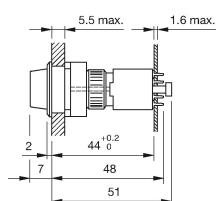
Function

Selector switch

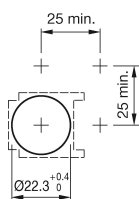
EAO – Your Expert Partner for Human Machine Interfaces

71-656.0 - Selector switch 3 positions round

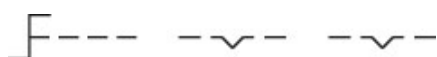
Dimensions



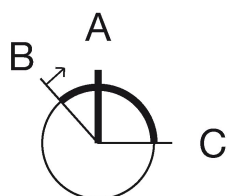
Mounting cut-outs



Wiring diagram



Switching positions



Additional information

Pitch of the front plate mounting holes must agree with the printed circuit board holes $\varnothing 3.5$ illuminative

Legend

Switching action: B = Momentary, C = Maintained