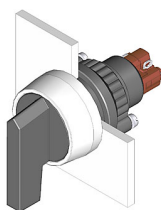


EAO – Your Expert Partner for Human Machine Interfaces

14-556.02502 - Selector switch actuator 2 positions

14-556.02502 - Selector switch actuator 2 positions



Attention: The preview is based on a sample product. This can differ from your current configuration.

Mounting

Mounting cut-out	Ø 22,3 mm
Design	raised

Front

Front dimension	Ø 29 mm
Front shape	round
Front bezel colour	natural anodized
Front bezel material	Aluminium

Other Attributes

Weight	0,024 kg
--------	----------

Operating-/Indication part

Lever illumination	non-illuminative
Lever colour	black
Lever material	Plastic
Lever shape	long
Switching angle	90° right

IP-Rating

Front protection	IP67
------------------	------

Connection Method

Terminal	Solder
----------	--------

Actuator

Switching action	Rest - Maintain
------------------	-----------------

Switching element

Rotary positions	2
Switching system	Snap-action switching element
Switching current	5 A
Contacts	1 NC + 1 NO
Contact material	gold-plated silver
Switching voltage	250 V AC

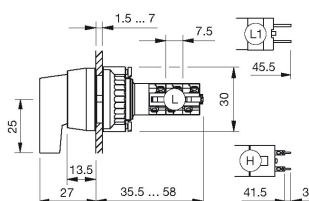
Function

Selector switch

EAO – Your Expert Partner for Human Machine Interfaces

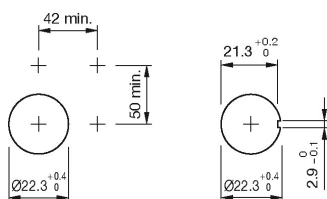
14-556.02502 - Selector switch actuator 2 positions

Dimensions

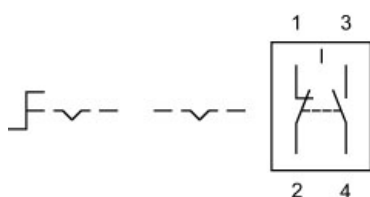


L = Solder terminal

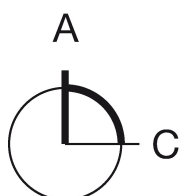
Mounting cut-outs



Wiring diagram



Switching positions



Additional information

The colour of anodized aluminium parts can vary due to technical production reasons

Legend

Contacts: NC = Normally closed, NO = Normally open

Switching action: A = Rest, C = Maintained