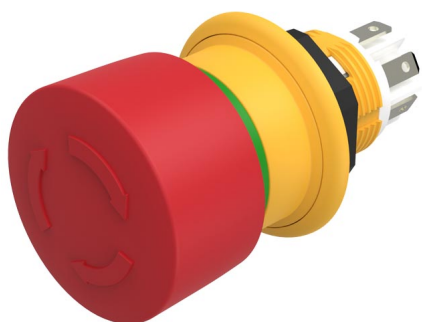


EAO – Your Expert Partner for Human Machine Interfaces

61-6441.4067 - Emergency stop switch compact, foolproof EN IEC 60947-5-5

61-6441.4067 - Emergency stop switch compact, foolproof EN IEC 60947-5-5



Attention: The preview is based on a sample product. This can differ from your current configuration.

Mounting

Mounting cut-out	Ø 16 mm
Design	raised

Front

Front shape	round
Front dimension	Ø 27 mm

Other Attributes

Marking	Arrows
Weight	0.018 kg

Operating-/Indication part

Lens material	Plastic
Lens colour	red
Lens profile	Mushroom

IP-Rating

Front protection	IP67, IP69K
------------------	-------------

Connection Method

Terminal	Solder 2.8 x 0.5 mm
----------	---------------------

Actuator

Switching action	Maintained
------------------	------------

Switching element

Contacts	3 NC
----------	------

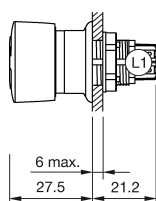
Function

Emergency stop switch	
-----------------------	--

EAO – Your Expert Partner for Human Machine Interfaces

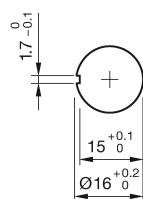
61-6441.4067 - Emergency stop switch compact, foolproof EN IEC 60947-5-5

Dimensions

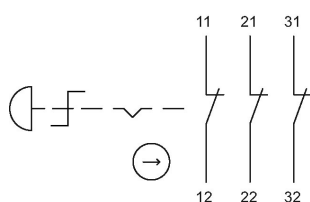


L1 = Solder/Plug-in terminal 2.8 x 0.5 mm

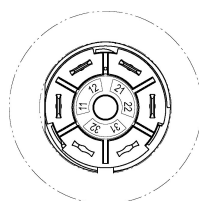
Mounting cut-outs



Wiring diagram



Component layout



Additional information

Twist to unlock clockwise

Position indication ring green

Application as per DIN EN ISO 13850 and EN 60204-1

Legend

Switching action: C = Maintained