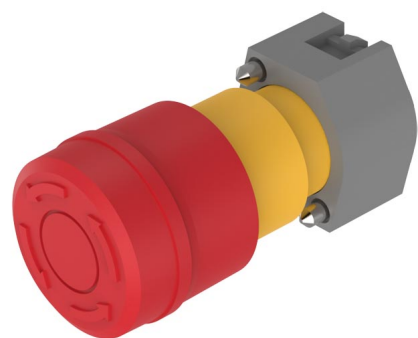


EAO – Your Expert Partner for Human Machine Interfaces

704.064.2A - Emergency-stop switch actuator, foolproof EN IEC 60947-5-5

704.064.2A - Emergency-stop switch actuator, foolproof EN IEC 60947-5-5



Attention: The preview is based on a sample product. This can differ from your current configuration.

Mounting

Mounting cut-out	Ø 22.5 mm
Design	raised

Front

Front shape	round
Front dimension	Ø 37 mm

Other Attributes

Marking	Arrows
Weight	0.300 kg

Operating-/Indication part

Lens material	Plastic
Lens optics	opaque
Lens profile	Mushroom
Lens colour	red
Lens illumination	non-illuminative

IP-Rating

Front protection	IP65
------------------	------

Actuator

Switching action	Maintained
Housing colour	yellow
Housing material	Plastic

Switching element

max. number of switching elements	2
-----------------------------------	---

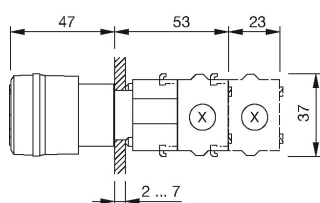
Function

Emergency stop switch

EAO – Your Expert Partner for Human Machine Interfaces

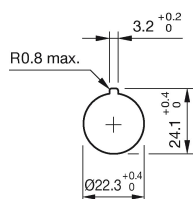
704.064.2A - Emergency-stop switch actuator, foolproof EN IEC 60947-5-5

Dimensions

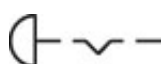


X = Screw terminal

Mounting cut-outs



Wiring diagram



Additional information

Shaft yellow

Twist to unlock anti-clockwise

Max. 2 slow-make elements can be clipped on

Application as per DIN EN ISO 13850 and EN 60204-1

Legend

Switching action: C = Maintained