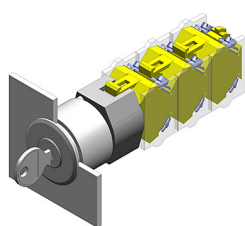


EAO – Your Expert Partner for Human Machine Interfaces

704.117.018 - Keylock switch actuator 3 positions

704.117.018 - Keylock switch actuator 3 positions



Attention: The preview is based on a sample product. This can differ from your current configuration.

Mounting

Mounting cut-out
Design Ø 30,5 mm
flush

Front

Front shape
Front dimension
Front bezel colour
Front bezel material round
Ø 35 mm
natural
Aluminium

Other Attributes

Weight 0,099 kg

Operating-/Indication part

Switching angle

IP-Rating

Front protection IP65

Actuator

Switching action Maintain(a) - Rest - Momentary

Switching element

Rotary positions 3
max. number of switching
elements 3

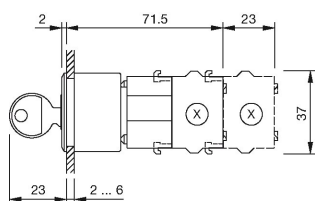
Function

Keylock switch

EAO – Your Expert Partner for Human Machine Interfaces

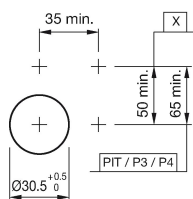
704.117.018 - Keylock switch actuator 3 positions

Dimensions



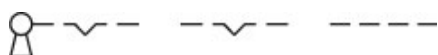
X = Screw terminal

Mounting cut-outs

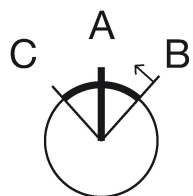


PIT = Push-in terminal

Wiring diagram



Switching positions



Additional information

The standard lock Ronis 251

Two keys are supplied with each key lock switch

Further lock numbers see «Technical data»

Max. 3 switching elements can be clipped on

The colour of anodized aluminium parts can vary due to technical production reasons

Legend

Switching action: A = Rest, B = Momentary, C = Maintained