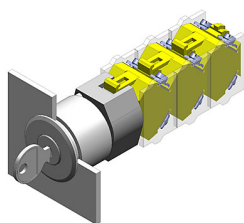


EAO – Your Expert Partner for Human Machine Interfaces

704.123.018 - Keylock switch actuator 2 positions

704.123.018 - Keylock switch actuator 2 positions



Attention: The preview is based on a sample product. This can differ from your current configuration.

Mounting

| | |
|------------------|-----------|
| Mounting cut-out | Ø 30,5 mm |
| Design | flush |

Front

| | |
|----------------------|-----------|
| Front shape | round |
| Front dimension | Ø 35 mm |
| Front bezel colour | natural |
| Front bezel material | Aluminium |

Other Attributes

| | |
|--------|----------|
| Weight | 0,099 kg |
|--------|----------|

Operating-/Indication part

| | |
|-----------------|-----------|
| Switching angle | 42° right |
|-----------------|-----------|

IP-Rating

| | |
|------------------|------|
| Front protection | IP65 |
|------------------|------|

Actuator

| | |
|------------------|---------------------|
| Switching action | Rest(a) - Momentary |
|------------------|---------------------|

Switching element

| | |
|-----------------------------------|---|
| Rotary positions | 2 |
| max. number of switching elements | 3 |

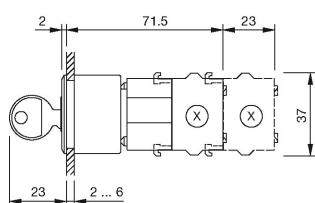
Function

| |
|----------------|
| Keylock switch |
|----------------|

EAO – Your Expert Partner for Human Machine Interfaces

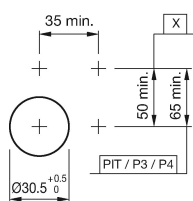
704.123.018 - Keylock switch actuator 2 positions

Dimensions



X = Screw terminal

Mounting cut-outs

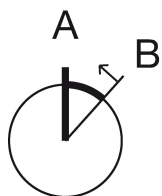


PIT = Push-in terminal

Wiring diagram



Switching positions



Additional information

The standard lock Ronis 251

Two keys are supplied with each key lock switch

Further lock numbers see «Technical data»

Max. 3 switching elements can be clipped on

The colour of anodized aluminium parts can vary due to technical production reasons

Legend

Switching action: A = Rest, B = Momentary