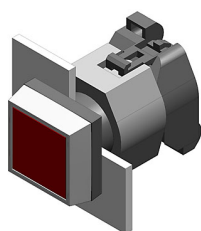


# EAO – Your Expert Partner for Human Machine Interfaces

## 704.206.5 - Indicator actuator front illumination

### 704.206.5 - Indicator actuator front illumination



*Attention: The preview is based on a sample product. This can differ from your current configuration.*

#### Mounting

Mounting cut-out	Ø 22,3 mm
Design	raised

#### Front

Front dimension	30 mm x 30 mm
Front shape	square
Front bezel material	Plastic
Front bezel colour	black

#### Other Attributes

Weight	0,050 kg
Marking plate colour	white
Marking plate optics	translucent
Marking plate illumination	illuminative

#### Operating-/Indication part

Lens optics	transparent
Lens material	Plastic
Lens colour	green
Lens profile	flat

#### IP-Rating

Front protection	IP65
------------------	------

#### Connection Method

Terminal	Screw terminal
----------	----------------

#### Actuator

Housing material	Plastic
Housing colour	black

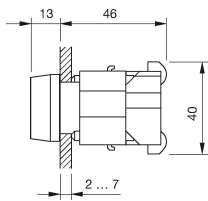
#### Function

Indicator
-----------

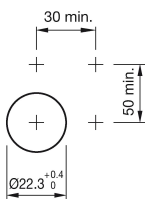
# EAO – Your Expert Partner for Human Machine Interfaces

704.206.5 - Indicator actuator front illumination

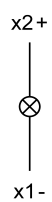
## Dimensions



## Mounting cut-outs



## Wiring diagram



## Additional information

Filament lamp or LED