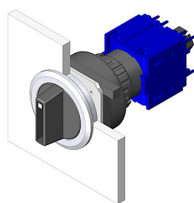


# EAO – Your Expert Partner for Human Machine Interfaces

## 71-658.0 - Selector switch 3 positions round

### 71-658.0 - Selector switch 3 positions round



*Attention: The preview is based on a sample product. This can differ from your current configuration.*

#### Mounting

Design flush

#### Other Attributes

Weight 0,003 kg

#### Operating-/Indication part

Switching angle  
Lever illumination  
Lever shape short  
Lever material Plastic

#### IP-Rating

Front protection IP65

#### Actuator

Switching action Maintain - Rest - Momentary

#### Switching element

Rotary positions 3

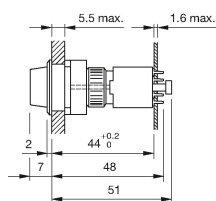
#### Function

Selector switch

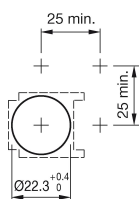
# EAO – Your Expert Partner for Human Machine Interfaces

## 71-658.0 - Selector switch 3 positions round

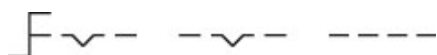
### Dimensions



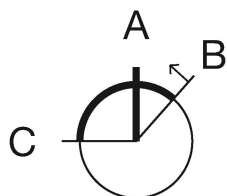
### Mounting cut-outs



### Wiring diagram



### Switching positions



### Additional information

Pitch of the front plate mounting holes must agree with the printed circuit board holes  $\varnothing 3.5$  illuminative

### Legend

Switching action: B = Momentary, C = Maintained