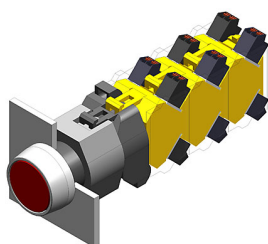


EAO – Your Expert Partner for Human Machine Interfaces

704.030.7 - Illuminated pushbutton actuator

704.030.7 - Illuminated pushbutton actuator



Attention: The preview is based on a sample product. This can differ from your current configuration.

Mounting

Mounting cut-out	Ø 22,3 mm
Design	raised

Front

Front shape	round
Front dimension	Ø 29 mm
Front bezel colour	grey
Front bezel material	Plastic

Other Attributes

Weight	0,056 kg
--------	----------

Operating-/Indication part

Lens optics	transparent
Lens material	Plastic
Lens colour	colourless
Lens profile	flat
Lens illumination	illuminative

IP-Rating

Front protection	IP65
------------------	------

Connection Method

Terminal	Screw terminal
----------	----------------

Actuator

Switching action	Momentary
Housing material	Plastic
Housing colour	grey

Switching element

max. number of switching elements	3
-----------------------------------	---

Illumination

LED colour	colourless
------------	------------

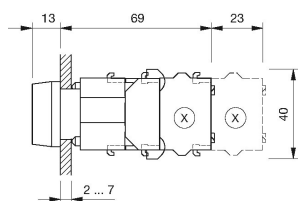
Function

Illuminated pushbutton

EAO – Your Expert Partner for Human Machine Interfaces

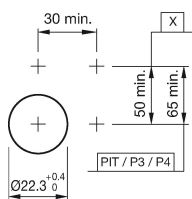
704.030.7 - Illuminated pushbutton actuator

Dimensions



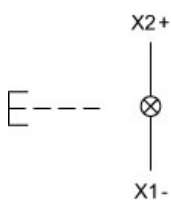
X = Screw terminal

Mounting cut-outs



PIT = Push-in terminal

Wiring diagram



Additional information

Frontring with protective cover to be mounted with a torque of 40 Ncm onto actuator
Max. 3 switching elements can be clipped on

Legend

Switching action: B = Momentary